

# Introduction to Early Learning STEM

## Course Brochure

### What's it about?

This course will help you understand the essential foundations of STEM teaching and learning and provide opportunities to help build knowledge, skills and confidence to take on STEM with young children.

### What will I learn?

- What STEM is and how to use STEM to develop 21st Century learning skills in Early Learning environments.
- Where STEM fits within the Early Years Learning Framework (EYLF).
- How to identify examples of STEM in everyday play.
- How to use STEM to develop curiosity and investigation.
- Strategies for setting up STEM learning activities, including:
  - Learning spaces for play and interaction.
  - Learning spaces with an educator guiding the experience.
- Features of a successful STEM learning space.

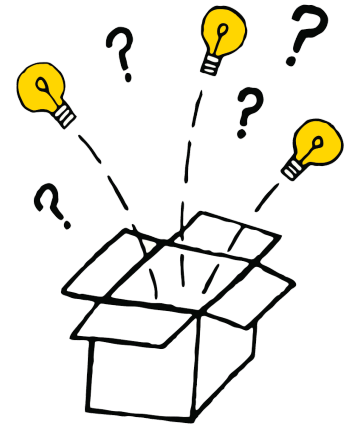
### How long does it go for?

This course will take you 2 hours to complete.

Enjoy it in one session or spread it out over a few weeks. You will have ongoing access.

### How does it work?

This course is on-demand and for private study. Learn at your own pace and at times that suit.



### What are the course modules?

- |                                |   |
|--------------------------------|---|
| 1. Introduction                | Get started with your online professional development.    |
| 2. STEM from an early age      | Identify the importance of STEM in early years education. |
| 3. Building confidence in STEM | Explore the essential elements of STEM Teaching.          |
| 4. Your Teaching               | Download teaching resources.                              |
| 5. Reflection                  | Reflect on your course learning and next steps.           |

# What are the Early Years Learning Framework links?

## Early Years Learning Framework – Outcome 4

- Children develop dispositions for learning such as curiosity, cooperation, confidence, creativity, commitment, enthusiasm, persistence, imagination and reflexivity.
- Children develop a range of skills and processes such as problem solving, enquiry, experimentation, hypothesising, researching and investigating.
- Children transfer and adapt what they have learned from one context to another.
- Children resource their own learning through connecting with people, place, technologies and natural and processed materials.

## Is it accredited for PD hours?

This course is mapped to the Australian Professional Standards for Teachers.

It is accredited for professional development hours in:

### Graduate Teacher – all states and territories

2.1.1 Demonstrate knowledge and understanding of the concepts, substance and structure of the content and teaching strategies of the teaching area.

2.5.1 Know and understand literacy and numeracy teaching strategies and their application in teaching areas.

3.3.1 Include a range of teaching strategies.

3.4.1 Demonstrate knowledge of a range of resources, including ICT, that engage students in their learning.

### Proficient Teacher – all states and territories

2.1.2 Apply knowledge of the content and teaching strategies of the teaching area to develop engaging teaching activities.

2.5.2 Apply knowledge and understanding of effective teaching strategies to support students' literacy and numeracy achievement.

3.3.2 Select and use relevant teaching strategies to develop knowledge, skills, problem solving and critical and creative thinking.

3.4.2 Select and/or create and use a range of resources, including ICT, to engage students in their learning

### Highly Accomplished Teacher – all states and territories except for NSW

2.5.3 Support colleagues to implement effective teaching strategies to improve students' literacy and numeracy achievement

3.3.3 Support colleagues to select and apply effective teaching strategies to develop knowledge, skills, problem solving and Critical and Creative Thinking

3.4.3 Assist colleagues to create, select and use a wide range of resources, including ICT, to engage students in their learning.



Completing Introduction to Early Learning STEM will contribute 2 hours of NSW Education Standards Authority (NESAs) Registered PD addressing 2.1, 2.5, 3.3, 3.4 from the Australian Professional Standards for Teachers towards maintaining Proficient Teacher Accreditation in NSW.



This course is accredited by TQI for 2 hours professional development for teachers in the ACT.

